

Remodel Magazine



A photograph of a modern bathroom. In the foreground, a large, white, rectangular bathtub is set on a dark, pebbled mosaic floor. The bathtub has a sleek, curved faucet. Behind the tub, a window with a dark wood frame looks out onto a landscape with trees. A cylindrical pendant light hangs above the tub. The walls are covered in dark, textured stone tiles. To the left, a small potted plant is visible on a ledge.

Simple and Serene

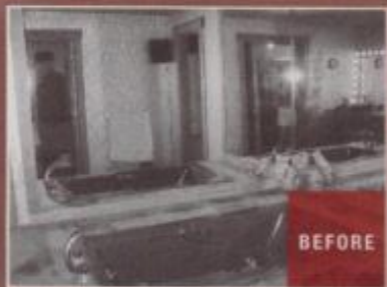
A MAINE COUPLE WITH A PASSION FOR MINIMALIST DESIGN TRANSFORMS THEIR NOT-SO-PRETTY-IN-PINK MASTER BATH INTO A 21ST-CENTURY SENSATION.

WRITTEN BY LYNNE MEREDITH SCHREIBER PHOTOGRAPHS BY JAMES SALOMON PRODUCED BY SUSAN SALOMON



OPPOSITE: A striking freestanding tub is the focal point of Ingrid and Brian Poulin's chic retreat.

THIS PHOTO: A simple, sleek faucet in a platinum matte finish complements the sharp angles of the white vessel sink.



LESS IS MORE

Despite its name, minimalist design rarely comes at a minimal price. Streamlined fixtures—uniquely engineered to hide plumbing elements—and distinctive finishes, such as the platinum matte finish on the faucets in this bath, typically cost more than mainstream materials. For their master bath, the Poulins chose a tub faucet (\$2,851) and sink faucets (\$1,822 each) from Dornbracht. The tub (\$5,340) and sinks (\$715 each) are from Wetstyle. Slate flooring, floating vanities, and contemporary light fixtures complete the minimalist look.



Shopping for a contemporary home in Maine is like trying to find a needle in a state-size haystack. So when Ingrid and Brian Poulin unearthed a 4,000-square-foot California contemporary in the heart of Cape Cod country, they were thrilled. Until they saw its pink shag master bath. “The bathroom was fully carpeted right up to the edge of the tub,” Ingrid says. “We were looking to get away from pink fixtures and pink carpeting and update the look.”

With European styling in mind, the pair hired designers Cricket King and Chris Coyle to create a simple, rectilinear, Zen-like retreat. The room’s focal point is a freestanding rectangular tub with a graceful pendant light above. Ingrid likes to take baths, so King insisted that her client step into the soaking tub on the showroom floor. “A lot of tubs have a radius on all corners,” Coyle says. “This one is not a sharp edge, but an eased edge with clean, crisp lines. It sets off other angles in the room.”

King designed floating vanities with mirrors and lowered soffits that define the space. The vanities, closet doors, and TV enclosure are made of bloodwood, which has a warm red hue and subtle grain. “We wanted to be careful that we didn’t pick a color that would make the room feel cold,” she says. The floor is slate, chosen for the Poulins’ love of natural materials and its inherent sense of movement. Inspired by river stones at the gym, the couple chose to surround the tub with a pebble inlay that’s easy on the feet, Ingrid says.

The Poulins liked the idea of an open shower but opted for an enclosed version to contain splashing from the new rain-style showerhead. Dressed in slate tile with pebble flooring to match the tub area, the shower fits in perfectly with the design aesthetic.

When Ingrid takes her morning shower, sunshine streams in through an enlarged window behind the tub. “You see the greenery outside. It’s gorgeous,” she says. “I absolutely love it.”

RESOURCES ON PAGE 118



CREATING A MINIMALIST BATH

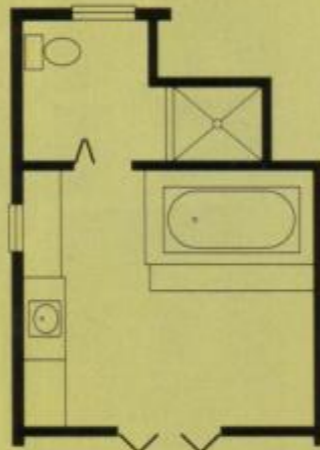
"Minimalist means clean lines, not a lot of moldings, not a lot of baseboards, and everything is put away," says designer Cricket King. With only the bare essentials on display, the focus is on choosing fixtures, sinks, and tubs that have strong design elements. "If you're going to do a deck-mount tub rather than a freestanding one," for example, "you make a design statement with the architecture to give the tub a stage." King also recommends picking fixtures and finishes that are distinctive, "otherwise you just end up with a vanilla, blah room," she says. "It can become just plain-looking rather than a minimalist design."

THE CHANGE

A pink-shag-carpeted master bath is transformed into a sleek, modern retreat with European flair.

WHAT IT TOOK

- * Enlarging a window and moving it to the left to center a dramatic freestanding tub; the new window lets in a lot of natural light while still obscuring the view of the outdoor air-conditioning element.
- * Designing a salt-and-pepper pebble inlay around the tub and in the shower to complement new slate flooring; a rain showerhead adds a touch of luxury.
- * Adding floating vanities made of reddish bloodwood to provide warmth and color; streamlined faucets and large mirrors enhance the contemporary feel.



BEFORE



AFTER

CHANGE



TOP LEFT: The Poulins chose to enclose the shower to minimize splashing from the rain-style showerhead. A pebble floor and slate wall tiles reflect the couple's love of natural materials.

LEFT: The warm red tone of bloodwood closet doors contrasts with the dark slate flooring and crisp white tub and sinks.

BOTTOM LEFT: River stones are used in the shower and as a border around the freestanding tub to designate wet floor space.

Pi